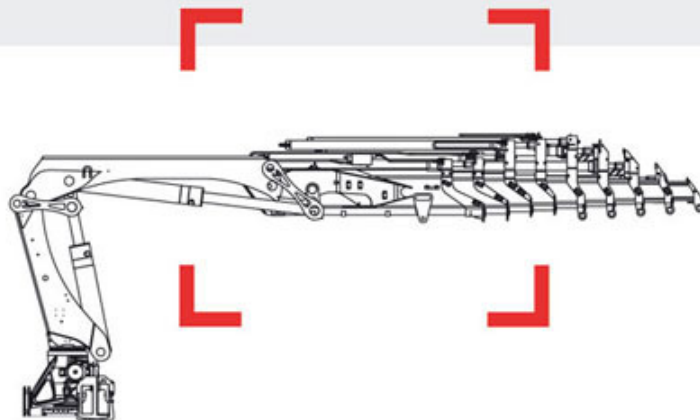


## E-6 HiPro Jib 150X -4



Technical Data

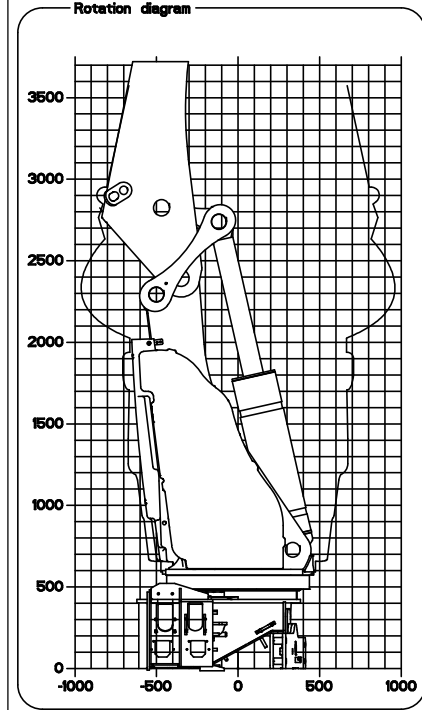
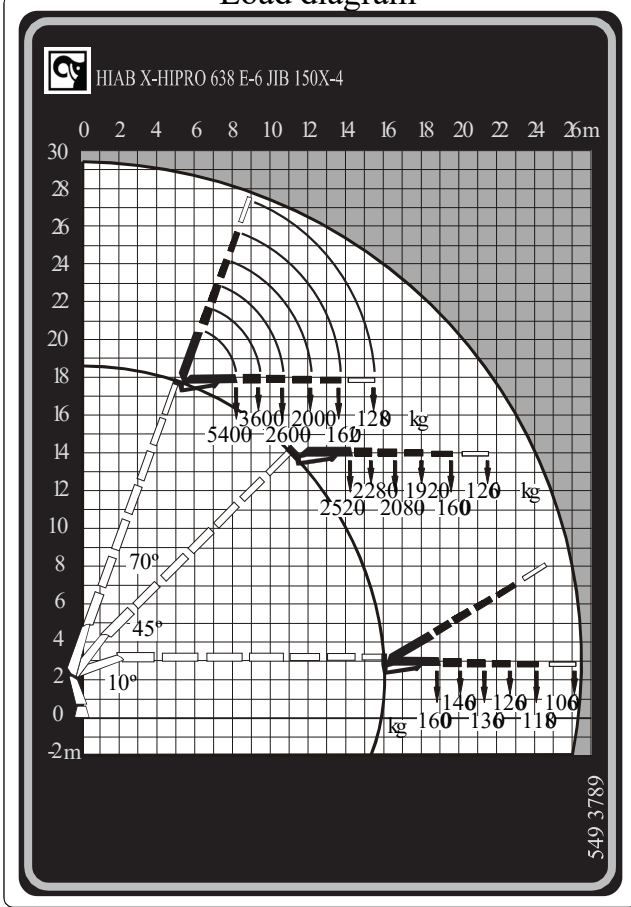


Diagrams

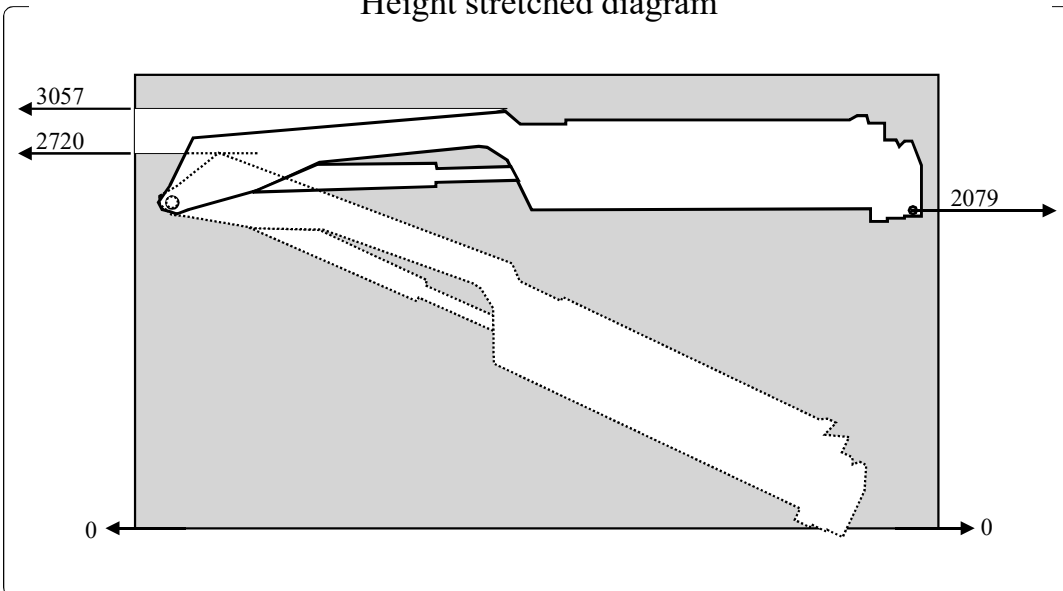
E-6 HiPro Jib 150X -4

Load diagram

Rotation diagram



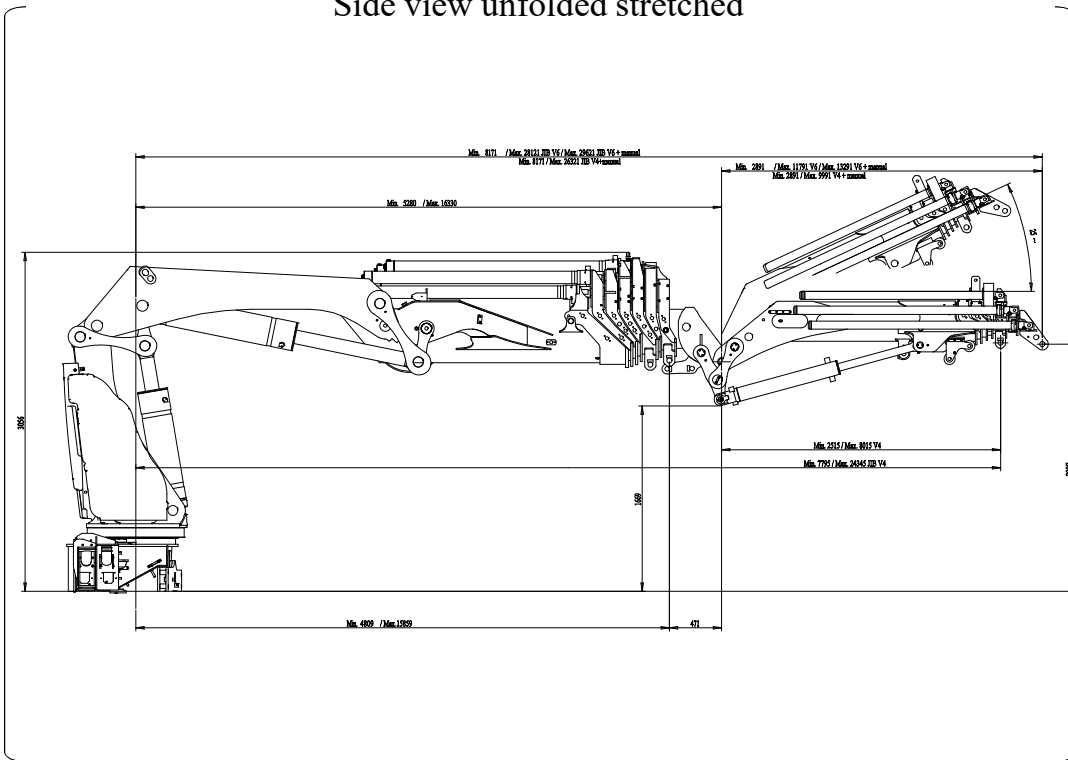
Height stretched diagram



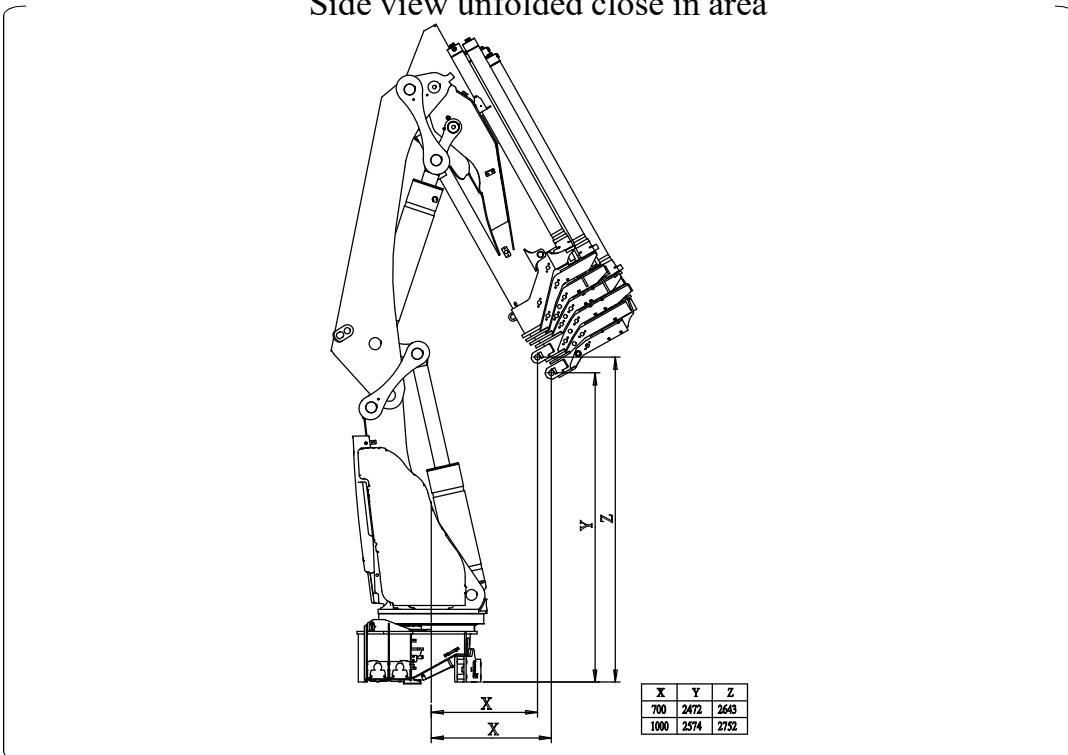
X-HIPRO 638E+JIB



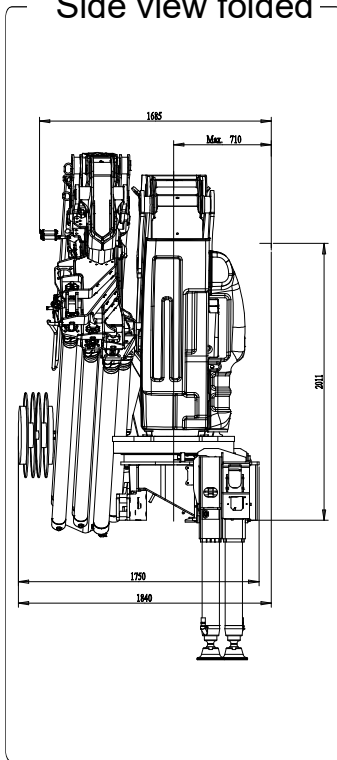
Side view unfolded stretched



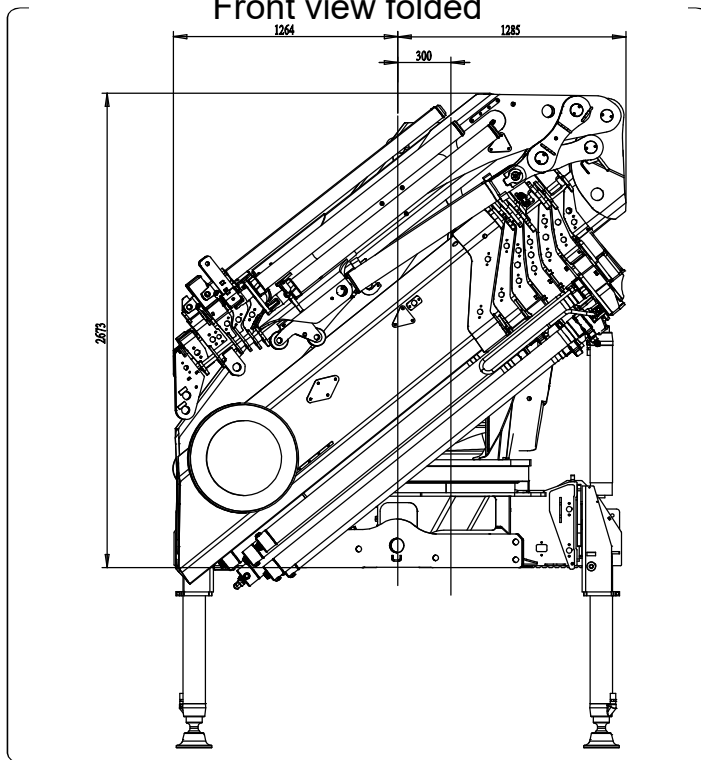
Side view unfolded close in area



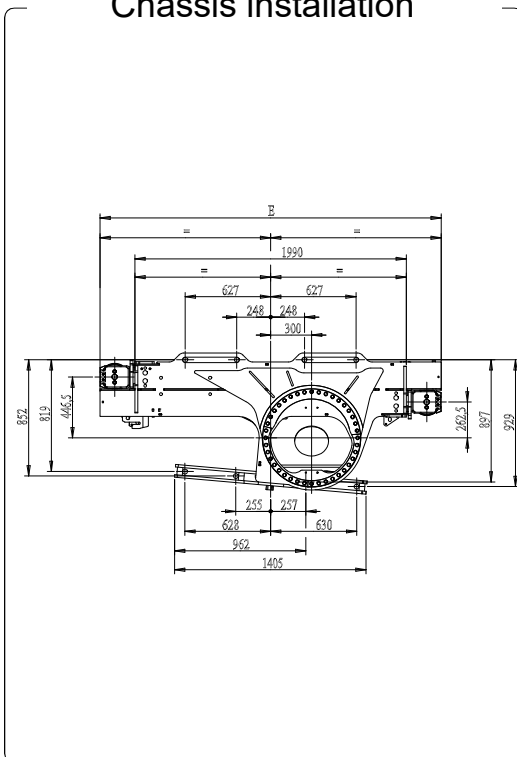
Side view folded



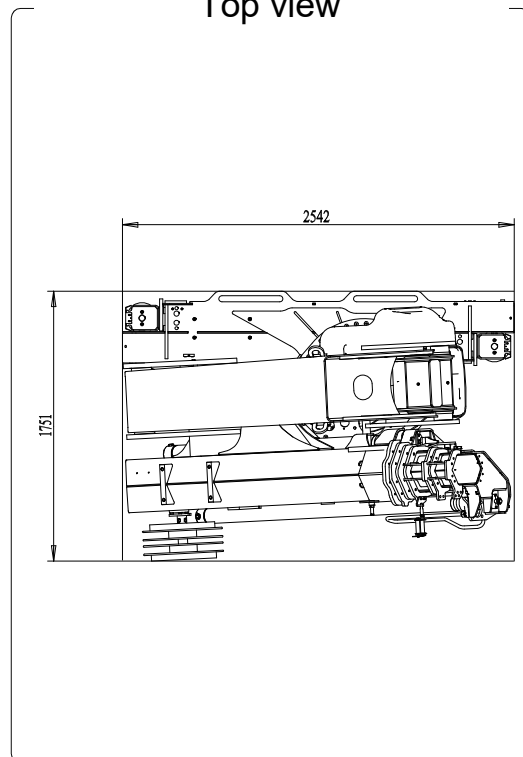
Front view folded



Chassis installation



Top view



Version	E-6 HiPro Jib 150X -4	
M <sub>dyn</sub>		700 kNm
Lifting capacity	kNm	490
Lifting capacity	tm	50.0
Lifting capacity (ADC)	kNm	530
Lifting capacity (ADC)	tm	54.0
Outreach - lifting capacity, standard	m-kg	18.7 - 1,600
		20.1 - 1,460
		21.3 - 1,360
		22.8 - 1,260
		24.2 - 1,180
Outreach - lifting capacity, manual extensions	m-kg	26.3 - 1,060
Hydraulic outreach, standard	m	0.0
Hydraulic boom extension	m	16.5 m
Outreach, manual extensions	m	0.0
Lifting height above installation level, hydr/man	m	26.7 / 28.6
Rec. oil flow	l/min	100 - 120
Power needed at rec. oil flow V80	kW	-
Power needed at rec. oil flow V91	kW	-
Working pressure	Mpa	38.0
Oil in tank	l	200 - 300
Tank capacity	l	0 - 340
Slewing angle	°	999
Max slope viable at full capacity	°	4
Slewing torque, gross	kNm	50.0
Slewing speed 80	°/s	8
Slewing speed	°/s	8
Lifting speed at standard hydraulic outreach	m/s	1.1
Height in folded position	mm	2,673
Width in folded position	mm	2,550
Install space required. Rotation area not included	mm	2,000
Install space required with hose and pipe kit	mm	2,000
Weight		
Crane in standard version without support legs	kg	6,735
Top seat	kg	0
Frame attachments	kg	78 - 123
Support leg equipment	kg	1,015 - 1,286
Data sheet		

E-6 HiPro Jib 150X -4