

# PKG 12001

Performance

**PALFINGER**



THE CRANE FOR DAILY GRAB DUTY



## PKG 12001 *PERFORMANCE*: SPEEDY, EFFICIENT AND RELIABLE

The PKG 12001 *Performance* stands out by virtue of its constant movement geometry and compact design, which make it the indispensable partner in construction site operation.

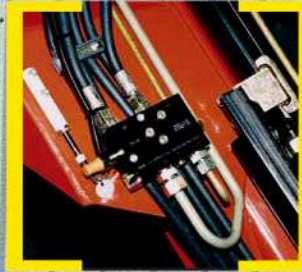
In particular its minimal parking length and low installation width make this crane the perfect working unit for any commercial truck used for tipping work. A grab crane with which you will have any situation easily under control!



# ECONOMIC ADVANTAGE THROUGH SUPERIOR TECHNOLOGY

## Return oil utilisation

The high speed of the extension system is impressive. It results from return oil utilisation, which is installed as standard, and the generously dimensioned hydraulic lines. This makes for increased efficiency in any type of working.



## Load-holding valves

They prevent the crane arm from dropping and are mounted as standard on the elevating and knuckle-boom cylinder as well as on the extension arm. The valves are positioned in such a way that they are protected from being damaged.



## Functional Design

- Enclosure in the area of the control valve

## Extension system

The extension cylinders are guided in Jordal rails over rollers.

Height compensation of the extension cylinders.



## Control valve

In combination with the PALFINGER radio remote control system the load-sensing proportional valve makes for highly sensitive crane control.



# PALFINGER INTERLOCK SYSTEM: THE UNIQUE SYSTEM FOR SECURING THE MANUAL STABILISER SYSTEM

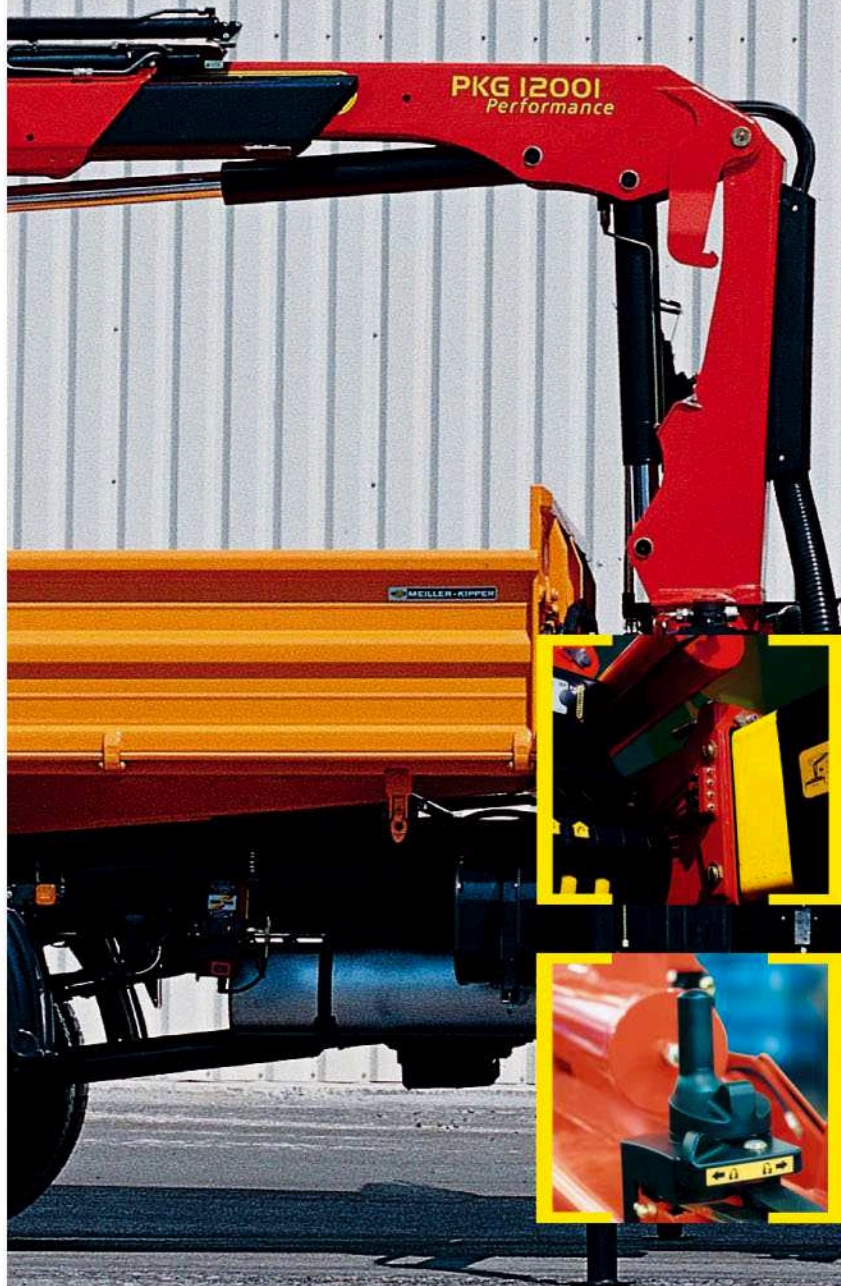


## Hose equipment for accessories

With this option you can provide the oil supply to accessories. The hoses are routed in compact troughs and plastic link chains. They are therefore very well protected.

## Internally routed oil ducts

The internally routed oil ducts permit a compact design for the extension system and ensure perfect protection from damage.



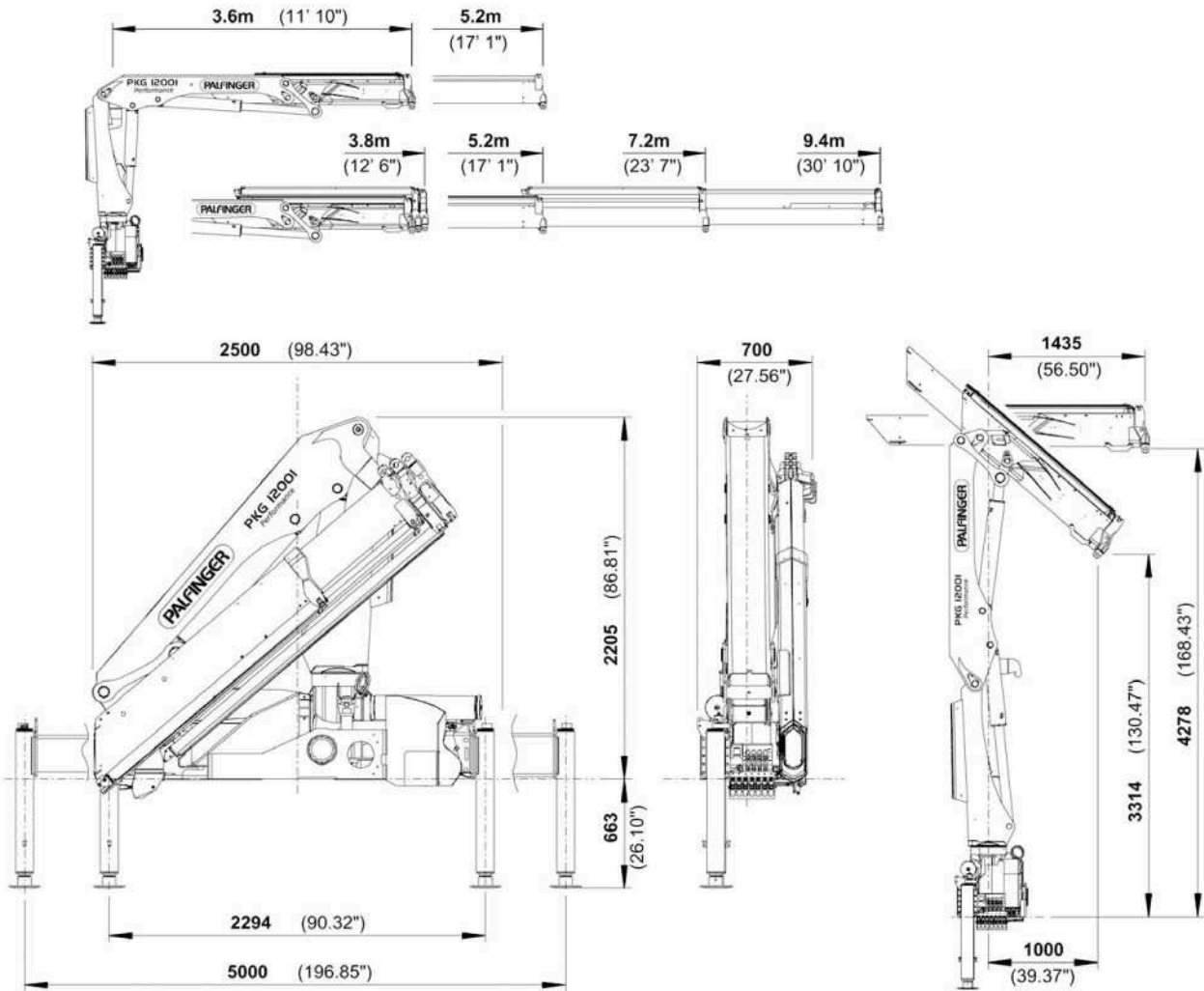
## Central lubrication

For all bearings on the base frame.

## PALFINGER Interlock System

The patented PALFINGER Interlock System secures the manual stabiliser system with up to four safety devices and offers highest operating convenience.

# DESIGN WHICH PAYS OFF



<b>PKG 12001 Performance</b>	
<b>Technical Specifications (EN 12999)</b>	
Max. lifting moment	11.6 mt/114.0 kNm 84050 ft.lbs
Max. lifting capacity	6200 kg/60.8 kN 13670 lbs
Max. hydraulic outreach	9.4 m 30' 10"
Slewing angle	420°

<b>PKG 12001 Performance</b>		
<b>Standard crane</b>		
Slewing torque	1.5 mt/15.0 kNm	11060 ft.lbs
Outreach	5.2 m	17' 1"
Stabilizer spread standard	5.0 m	16' 5"
Stabilizer spread max.	6.6 m	21' 8"
Fitting space required	0.70 m	2' 4"
Width folded	2.5 m	8' 2"
Max. operating pressure	300 bar	4350 psi
Recommended pump capacity	from 40 l/min 8.8 imp.gal./min 10.6 US gal./min to 60 l/min 13.2 imp.gal./min 15.9 US gal./min	
with RC- control and LS-system	from 50 l/min 11.0 imp.gal./min 13.2 US gal./min to 70 l/min 15.4 imp.gal./min 18.5 US gal./min	
Dead weight standard crane	1455 kg	3210 lbs

Applications shown in the leaflet do not always correspond to the standard specifications. Country-specific regulations must be considered for the crane installation.



# THE GRAB CRANE WITH PERFECT DIMENSIONS

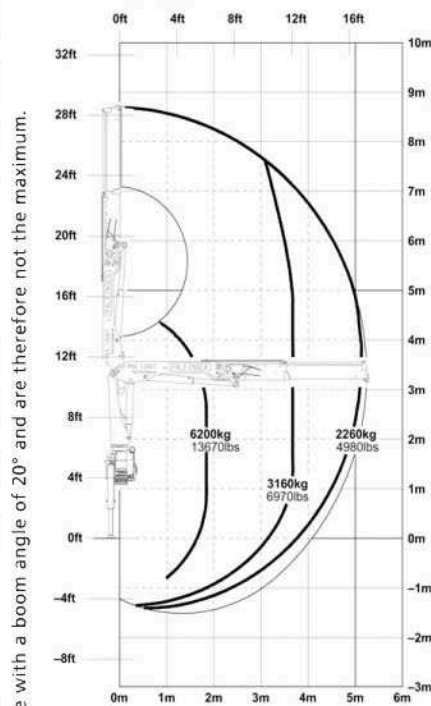
## Max. lifting capacities

PKG 12001 Performance			
Max. lifting capacities		6200 kg	13670 lbs
Outreach	Capacity		
<b>hydraulic</b>			
3.7 m	12' 2"	3160 kg	6970 lbs
5.1 m	16' 9"	2260 kg	4980 lbs

PKG 12001 Performance A			
Max. lifting capacities		6100 kg	13450 lbs
Outreach	Capacity		
<b>hydraulic</b>			
3.7 m	12' 2"	3080 kg	6790 lbs
5.1 m	16' 9"	2180 kg	4810 lbs
7.1 m	23' 4"	1550 kg	3420 lbs

PKG 12001 Performance B			
Max. lifting capacities		6000 kg	13230 lbs
Outreach	Capacity		
<b>hydraulic</b>			
3.7 m	12' 2"	3010 kg	6640 lbs
5.1 m	16' 9"	2100 kg	4630 lbs
7.1 m	23' 4"	1470 kg	3240 lbs
9.2 m	30' 2"	1110 kg	2450 lbs

## PKG 12001 Performance



The outreaches stated are with a boom angle of 20° and are therefore not the maximum.

